

Major scales (nut position) for Tenor Banjo

Written in traditional notation, one octave above sounding pitch.

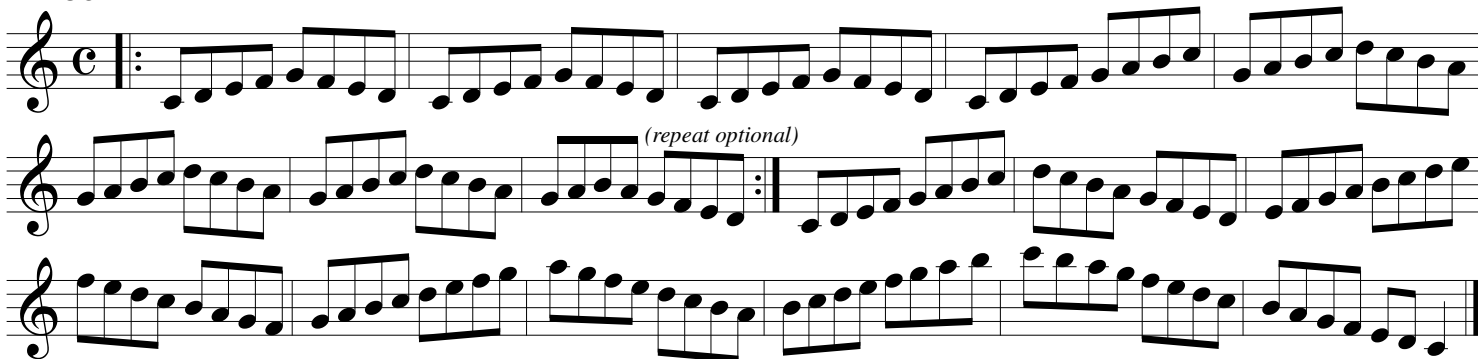
Latest version available at www.dmclure.org/banjo

Practice these exercises in all keys, using the fingerings diagrammed below.

EXERCISE 1



EXERCISE 2



EXERCISE 3



<p>C major (low)</p>	<p>G major</p>	<p>D major (high)</p>	<p>D\flat major (low)</p>	<p>A\flat major</p>	<p>E\flat major (high)</p>	<p>D major (low)</p>	<p>A major</p>	<p>E major (high)</p>
<p>E\flat major (low)</p>	<p>B\flat major</p>	<p>E major (low)</p>	<p>B major</p>	<p>F major</p>	<p>C major (high)</p>	<p>F\sharp/G\flat major</p>	<p>D\flat major (high)</p>	